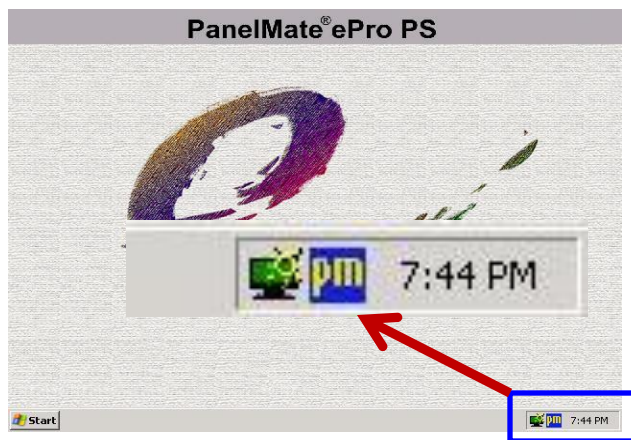
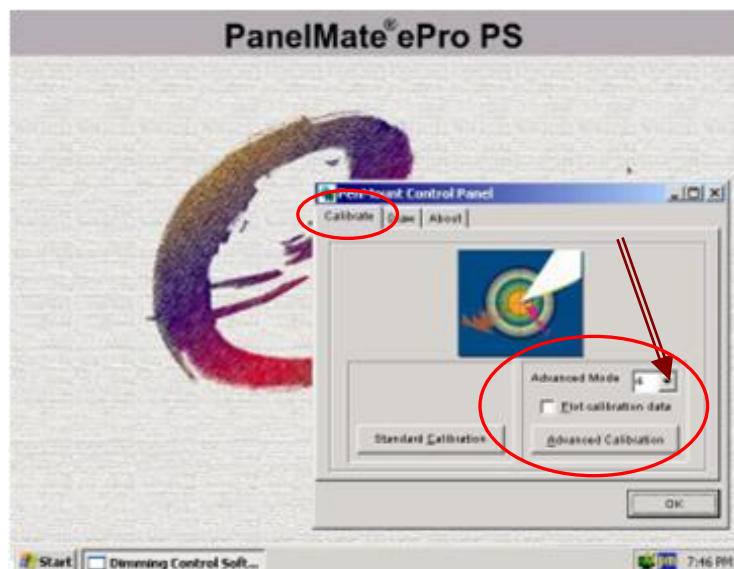


Calibrate the ePro Touch Screen

1. Exit Application
 - 1) Select "Service/Help" screen
 - 2) Press "Exit Program"
 - 3) Press "Yes" to exit to Windows
2. If bottom panel is not shown, press the bottom of the touch screen
 - 1) Select "PM"
 - 2) Select "Control Panel"

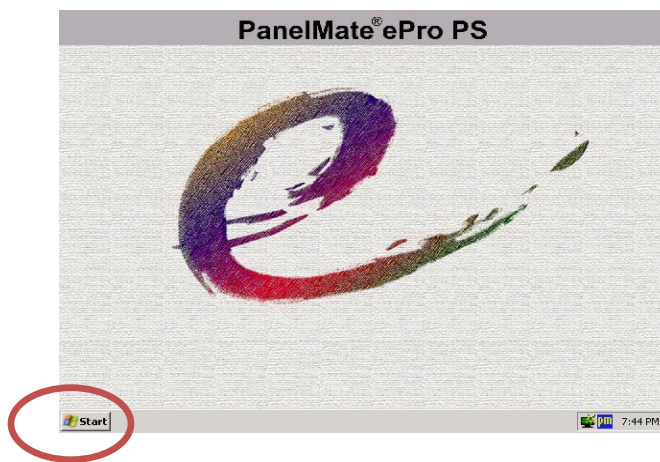


1. Select "Calibrate" tab
2. Under Advance Mode select "16 or 25"
3. Press "Advanced Calibration" button



- Follow On-Screen direction.
- Touch the red squares as directed (top, right, bottom, left and central-area).
- Select OK.

Perform a PROTECT MODE SAVE



- You must insure that a protect mode save is done after every change done on the ePro Unit.
- From ePro Unit **Start** Menu → **Programs** → **ePro Manager**
- ePro Screen will Appear.
- Click "**Protect Mode Save**"
- Click "**Commit**"
- Go to Next step.