

Loading a PanelView Plus Application via Compact Flash Memory Card

Note: You must have a Compact Flash Card and reader OR a USB Memory Stick. If you are working on a CompactLogix system, there should be a Compact Flash Card in the PLC Processor.

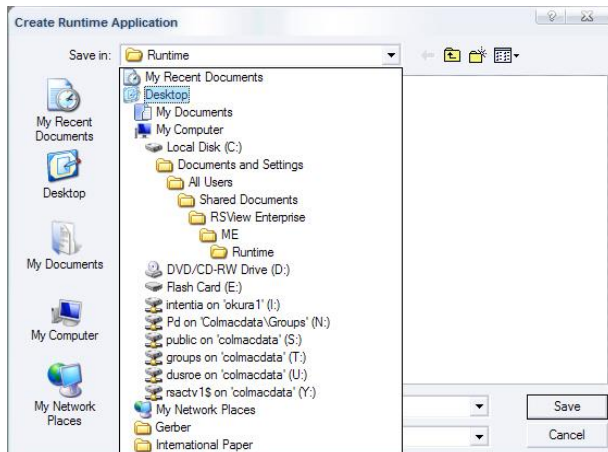
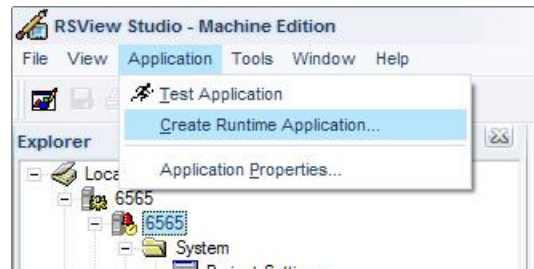
Tip: You can get the PanelView to create the correct folders for you, for storing your MER files on your flash card. Just follow steps 1-7 in the **Transferring the File to the PanelView** section. At the point that you change the **Source** to external, the folders will be created on the flash card.

Setting up the Flash Card

1. The PanelView will look for applications in a specific location on your flash card. You must create a group of folders on the flash card to save your MER files in.
2. Open up your Flash Card and create a new folder called **Rockwell Software**.
 - a. Navigate into **Rockwell Software** and create a new folder called **RSViewME**.
 - b. Navigate into **RSViewME** and create another new folder called **Runtime**.
3. Copy the MER file to the **Runtime** folder on the Compact Flash Card. (If the MER file is in the project folder under OIF then Copy this file to the Runtime folder on the flash card)

Creating an MER

1. After making changes you must compile your application into an MER file to load into the PanelView. From the drop down menus, click **Application – Create Runtime Application**, like shown.



2. A window will open up asking for a name to save it as. I would suggest changing where the file is going to be saved. You can do this from the drop down menu as shown or by clicking one of the icons on the left. I usually save to the desktop, or you can save it directly to the flash card.

3. After clicking save, an MER file will be compiled. This process may take a couple of minutes to complete. By default, the MER file will be located in this folder:
C:\Documents and Settings\All Users\Documents\RSView Enterprise\ME\Runtime
4. Now save the MER into the **Runtime** folder on your flash card. When you place the flash card in the PanelView, it will look in this location for the file.

Transferring the File to the PanelView

1. Insert the flash card into the PanelView.
2. If an application is running, exit it via the shutdown button. This is typically found on the Information Screen.
3. Press **Terminal Settings**
4. Navigate to **File Management** and press enter.
5. Navigate to **Copy Files** and press enter.
6. Navigate to **Copy Applications** and press enter
7. Press the **Source** button to change the source location to **External**. *This tells the PanelView where to get the new MER from.*
8. Press **Destination** and a screen should come up where you can copy the application to.
9. Press **Copy** and the application will be copied from the flash memory to the PanelView.
10. Exit back out to the main setup screen by press Cancel, Close, Close, Close.

Loading the Application to Run on the PanelView

1. Press **Load Application**.
2. Navigate to the new application (filename.MER) and press **Load**.
3. It will now ask you if you want to replace the communications.
 - a. If nothing has changed as far as communications, press **No**.
 - b. If loading for the first time you must press **Yes**.
4. Once the application is done loading, press **Run** to start the application.

