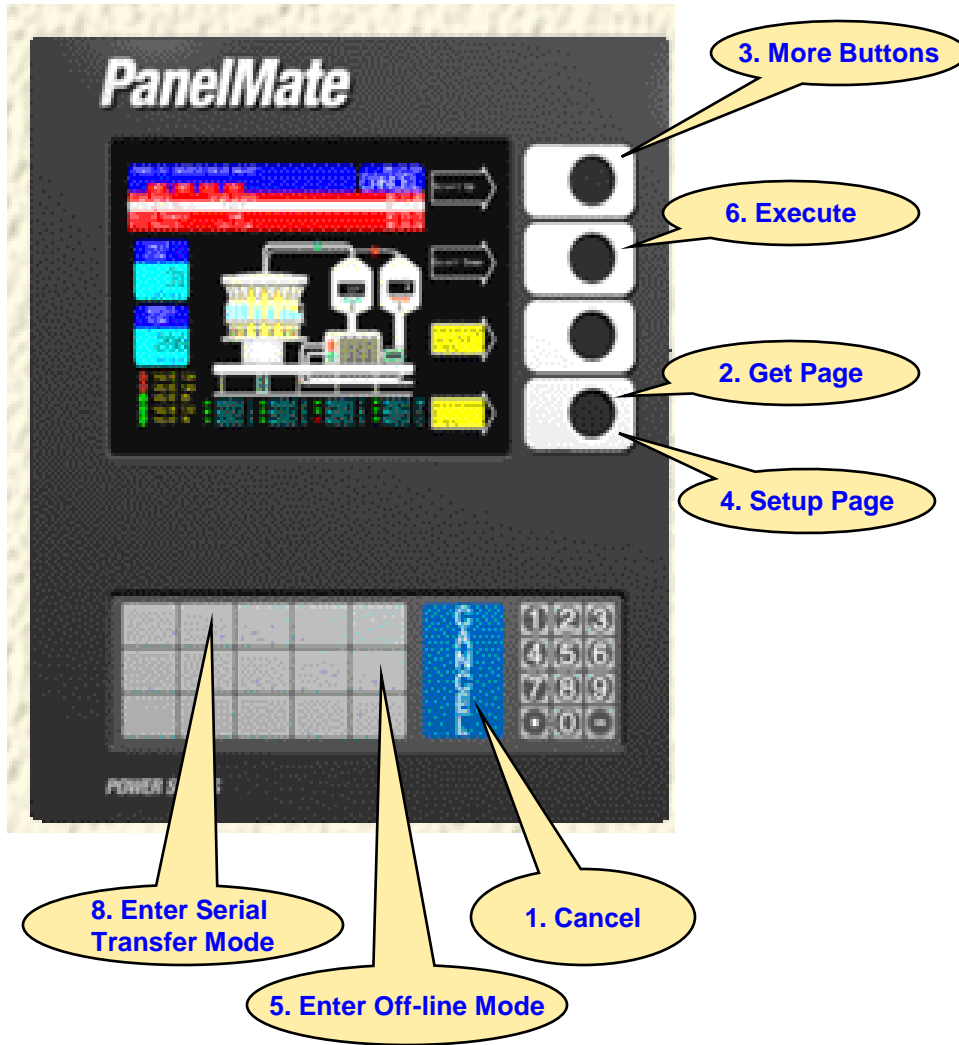


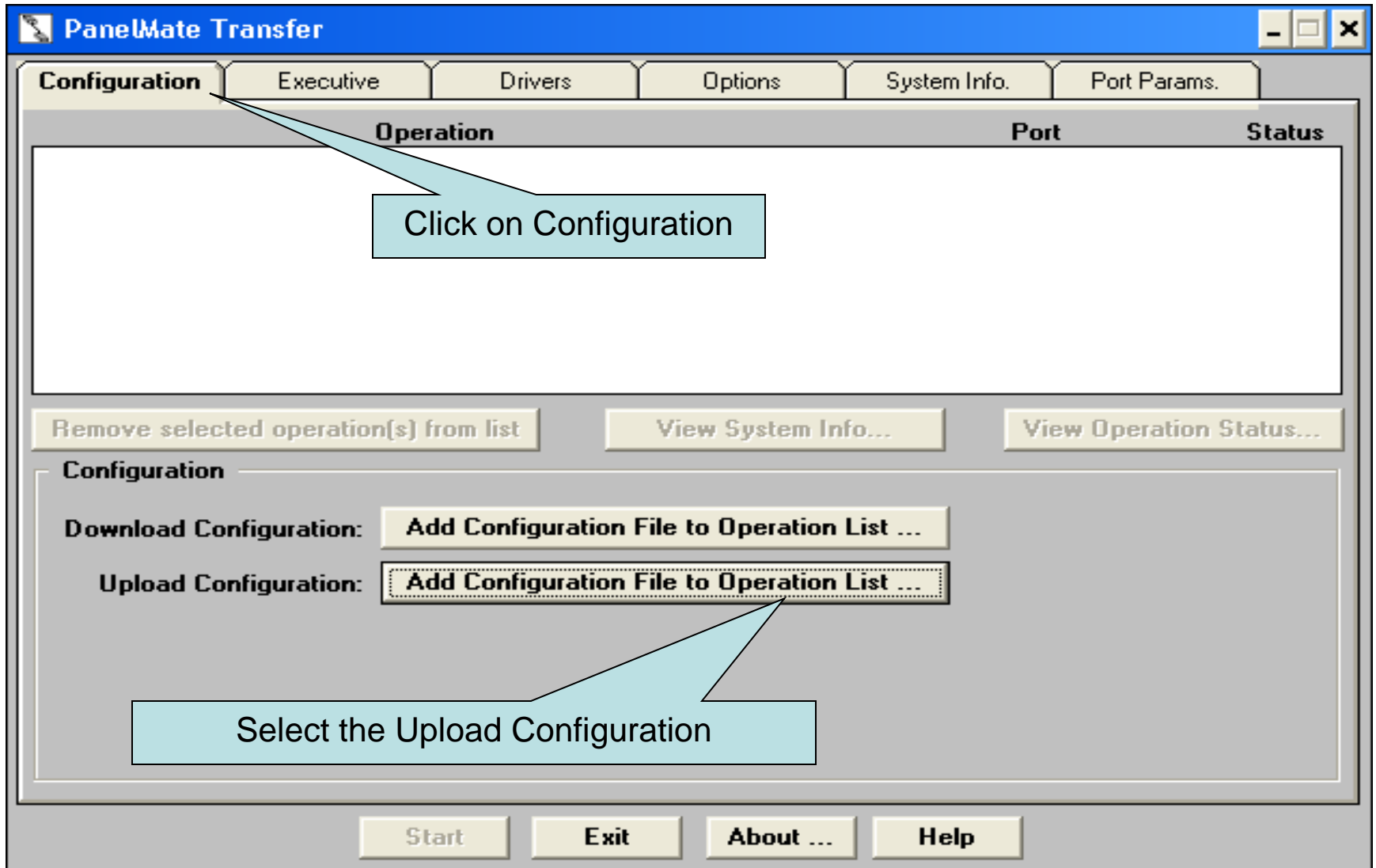
Preparing the PanelMate for transfer



Enter Serial Transfer Mode:

1. Select the 'CANCEL' template.
2. Press the control button labeled 'Get Page'.
3. Press the control button labeled 'More Buttons'.
4. Press the control button labeled 'Setup Page'.
5. Select the 'Enter Off-line Mode' template.
6. Press the control button labeled 'Execute'.
7. Key-in password via the numeric keypad, then press the control button labeled 'Enter Password'.
8. Select the 'Enter Serial Transfer Mode' template.
9. Remove cable from Panelmate port 1 .
10. Connect the Computer -> Panelmate cable to port 1 in the back off the Panelmate.
11. Panelmate ready to transfer file.

How to Upload PanelMate Configuration File



How to Add PanelMate Configuration File

The main window is titled "PanelMate Transfer" and has tabs for "Configuration", "Executive", "Drivers", "Options", "System Info.", and "Port Params.". The "Configuration" tab is active, showing a table with columns "Operation", "Port", and "Status". Below the table are buttons for "Remove selected operation(s) from list" and "View System Info...". At the bottom are "Start", "Exit", "About...", and "Help" buttons.

The "Upload Configuration" sub-dialog is open, showing a "File Name:" field with ".pps" entered. Below it is a list of files, with "CEMXCPM.PPS" selected. To the right is a "Directories:" list showing "c:\", "427", "BINHPI~1", "Bob", "BOB_JE~1", and "CA_LIC". Below that is a "List Files of Type:" dropdown set to "PanelMate Power Series" and a "Drives:" dropdown set to "c:". Buttons for "OK", "Cancel", "Help", and "Network..." are on the right.

Type in filename and extension to be added (CPM.pps)
Then press 'OK'

You are now ready to Transfer - Upload

