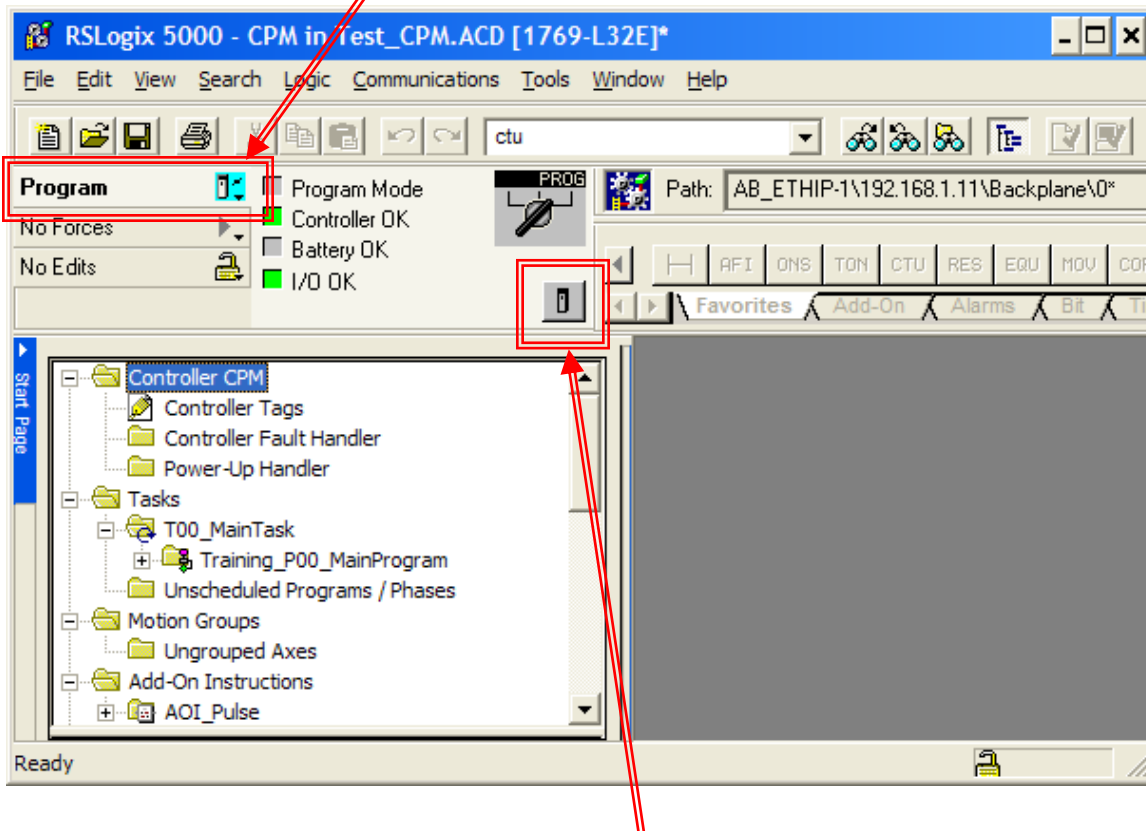


How to Load / Store using a Compact Flash Card

1. Make sure the Compact Flash is in the PLC.
2. Go **Online** with the PLC and turn the **key to PROG** position.



3. Now we are ready to store our controller program and firmware to the CompactFlash card. To update firmware of the devices in the I/O tree, Firmware Supervisor must be enabled in the program and card must store the applicable firmware.

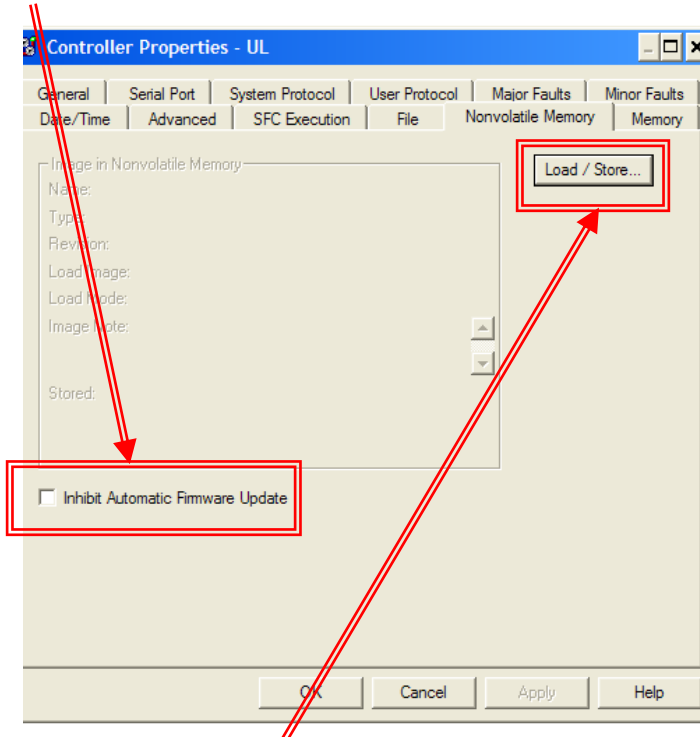
To write an image to the card, **we must be ONLINE and in PROGRAM mode with the controller (turn PLC keyswitch to PROG position)**

Click the **Controller Properties** button

4. Select the **Nonvolatile Memory** tab.

5. Your CompactFlash card may or may not have a project stored. We will be writing over any existing image on the card.

Make sure the **“Inhibit Automatic Firmware Update”** is **unchecked** so the controller will automatically update firmware of the peripheral devices without any user intervention:

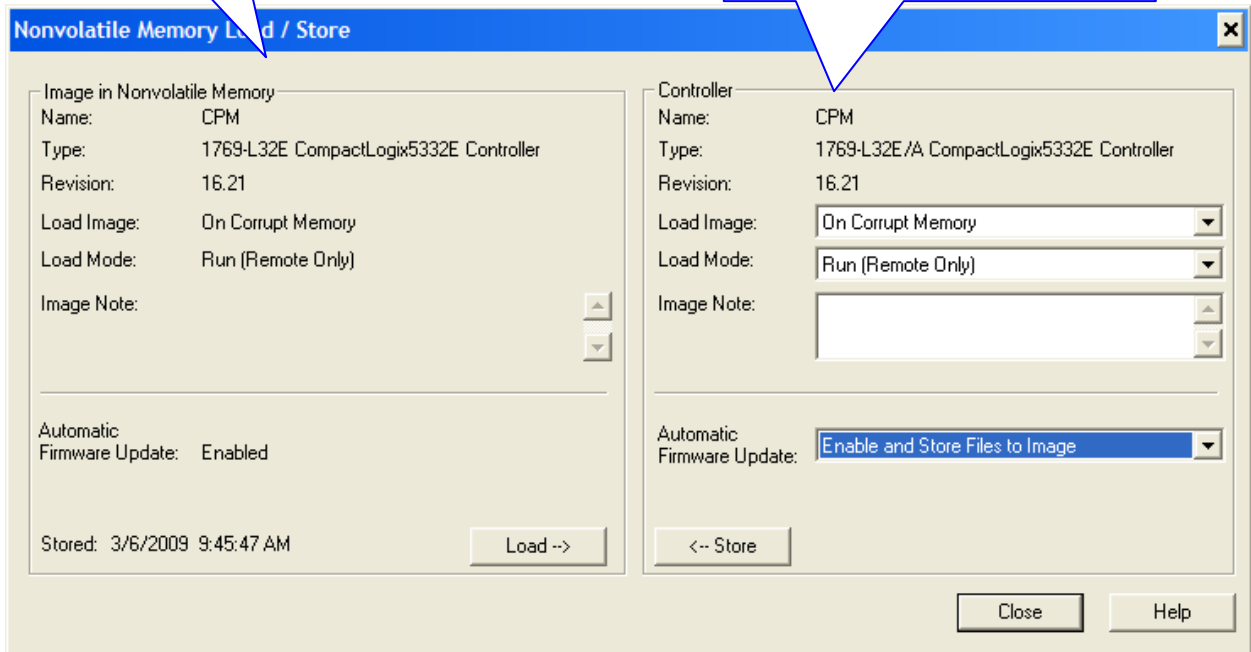


6. Click the **Load / Store** button.

- 7. In the window below, the left-hand side shows the project stored in the CompactFlash card, and the right-hand side is user settings to configure the CompactFlash card: load setting for controller project and automatic firmware update (Firmware Supervisor) setting:

COMPACT FLASH:
Project currently stored on Compact Flash w/ settings

COMPACT LOGIX PLC:
Project currently on the Compact Logix PLC w/ user selected settings:
Load Image
Load Mode
Automatic Firmware Update



8. You can configure when the controller project should be loaded from the CompactFlash card and what state should the controller be once the project is loaded. Refer to the FYI below for explanations on the dropdown selections. Match the following selections:
- Load Image: **On Corrupt Memory**
 - Load Mode: **Run (Remote Only)**
 - Image Note: **'Service Training'**

Controller Section Explanation

Load Image

The condition under which the image stored in nonvolatile memory is loaded back to controller memory. Available conditions include the following:

- **On Corrupt Memory** – this causes a load whenever there is no project in the controller and you turn on or cycle power on the chassis. If you are using a battery the controller, selecting this option performs a load only if the battery has failed to maintain the project during a loss of power.
- **On Power Up** – this causes a load whenever you turn on or cycle power on the chassis. If you are using a battery on the controller, selecting this option performs a load, even if the battery has maintained the project during loss of power.
- **User Initiated** – choose this option if you want to load only through RSLogix 5000 software.

Load Mode

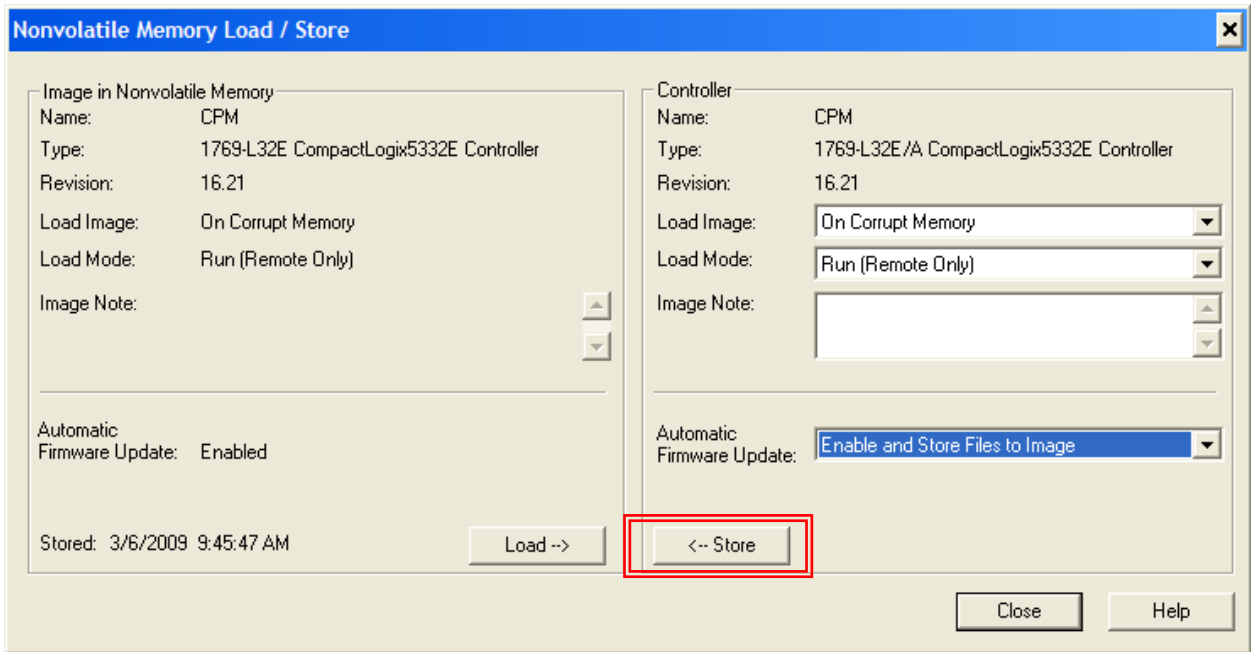
The mode the controller enters upon loading from nonvolatile memory:

Program (Remote Only) or Run (Remote Only)

Image Note

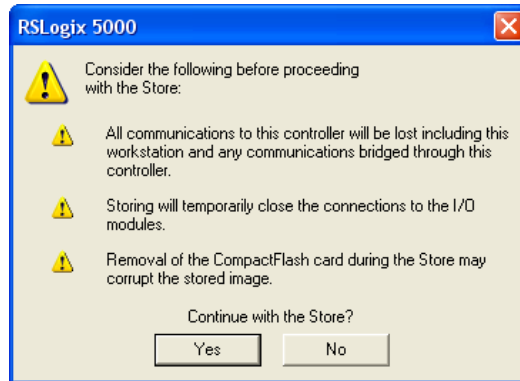
Descriptive information that you entered at the time the image was stored in nonvolatile memory. You may enter up to 128 text characters.

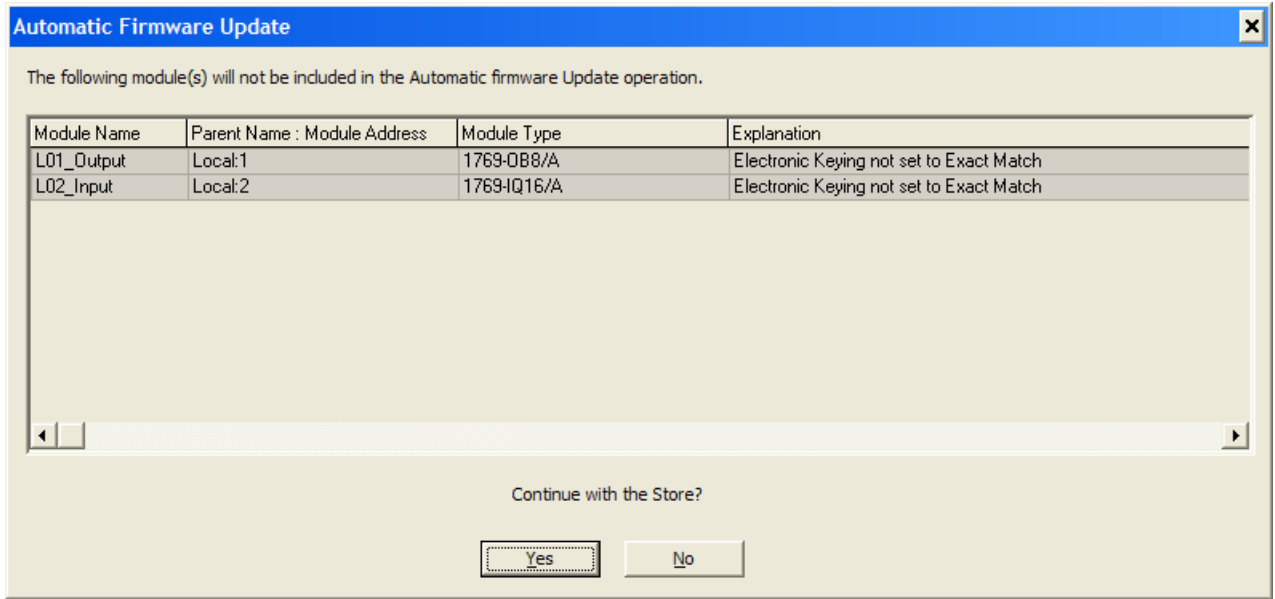
9. Lastly, click **Store** to write the image from the Controller (PLC) to the CompactFlash card.



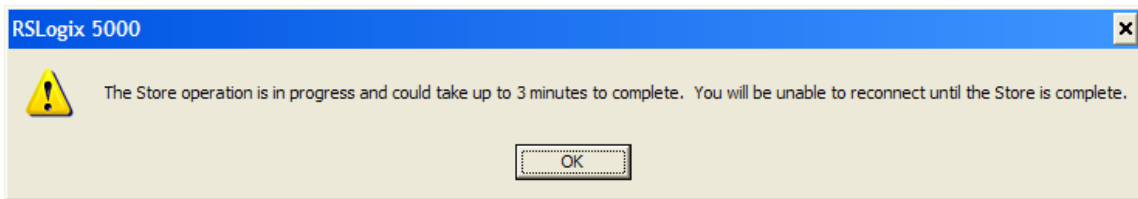
For **Store** image to Compact Flash,

Click **Yes** to proceed with the Store:

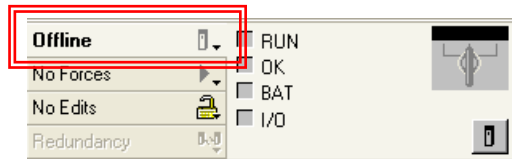




10. A window showing firmware storage status appears. When it is complete, the following message appears, click **OK**.

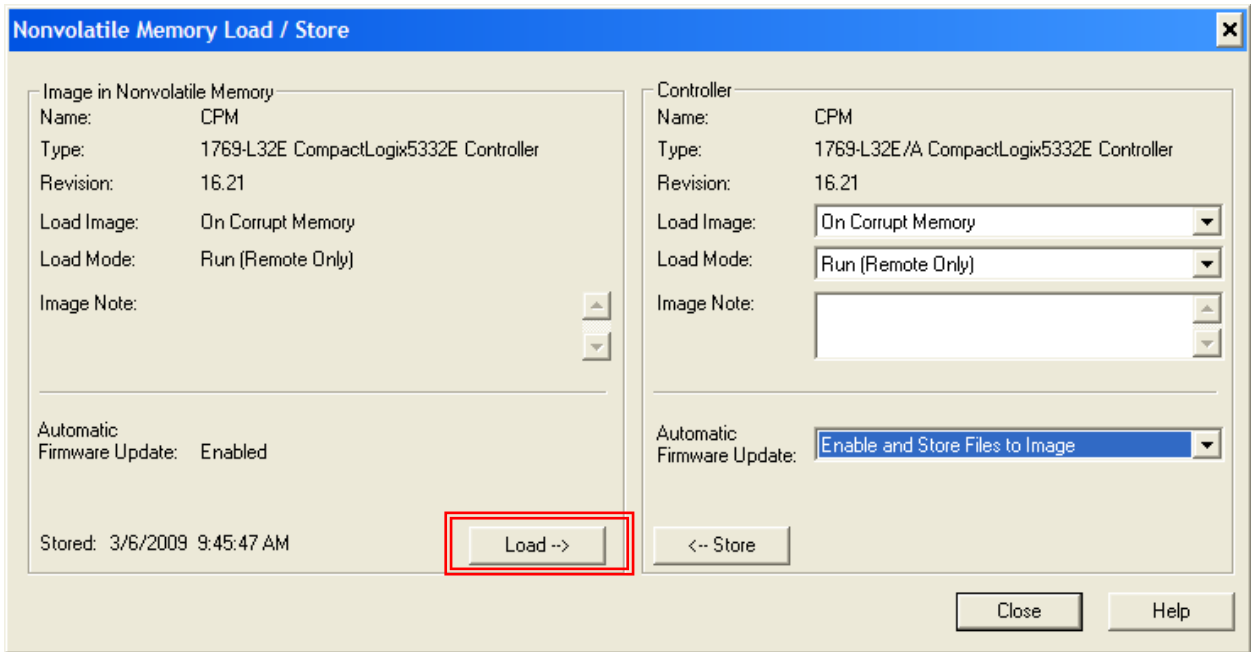


11. When completed, in RSLogix 5000, you will be kicked **offline**:



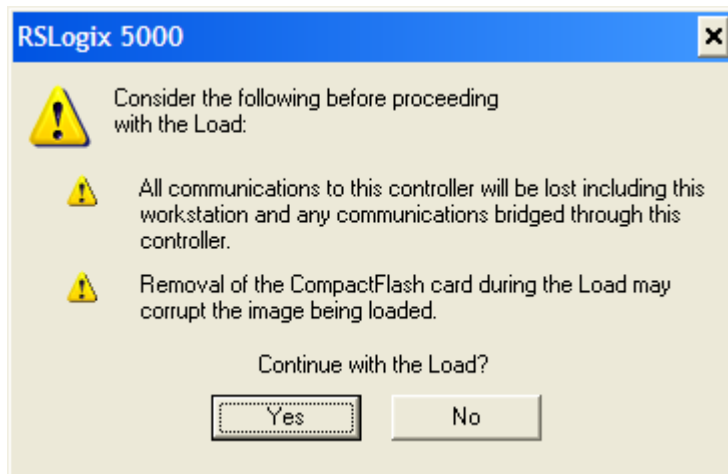
You have created a CompactFlash card with an image of the controller firmware, program and compatible module firmware for your Logix system.

Click **Load** to write the image from the CompactFlash card to the Controller (PLC)

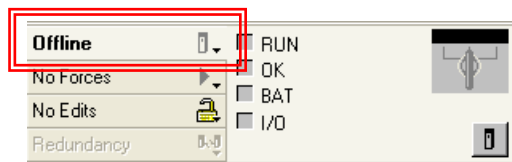


For **Load** image to Compact Flash,

Click **Yes** to proceed with the Load:



When completed, in RSLogix 5000, you will be kicked **offline**:



You have loaded an image from a CompactFlash card to the controller with firmware, program and compatible module firmware for your Logix system.

