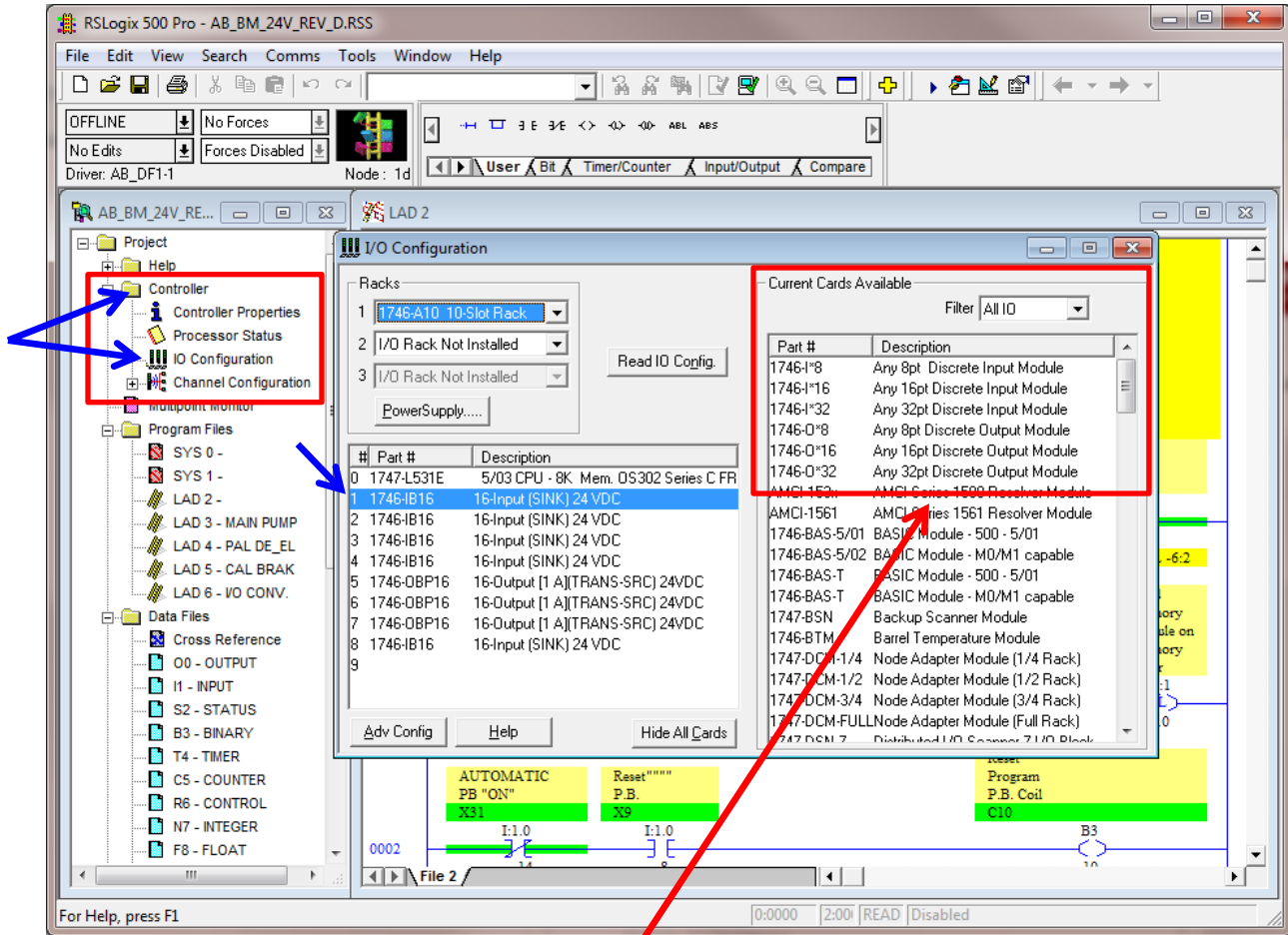


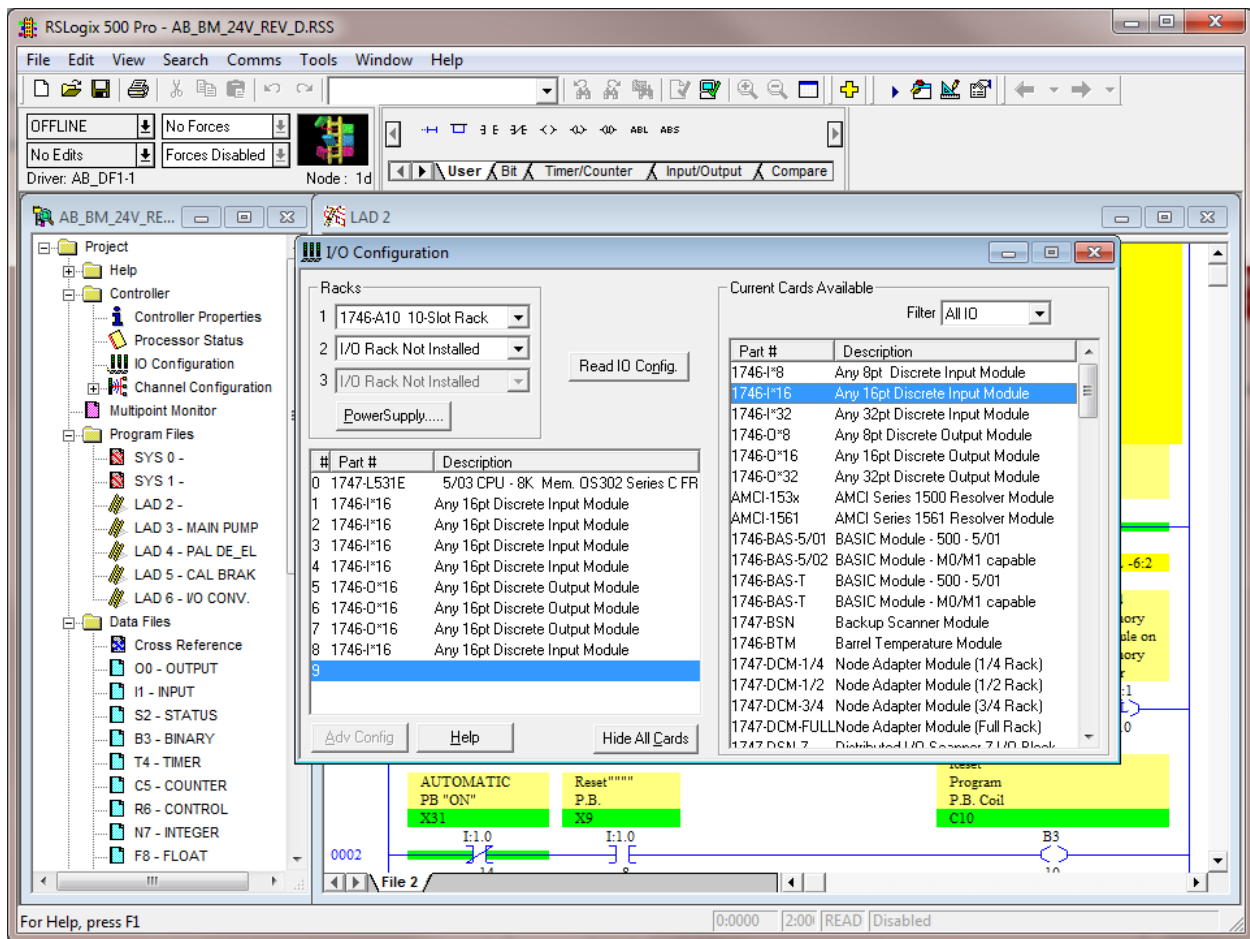
## How to Change AB SLC Input & Output module Configuration

Issue: Obsolete Specific IO Module

1. Open the AB SLC program
2. Connect and get Online with the SLC Processor
3. Upload & Save the latest program
4. Go OFFLINE
5. Select Controller → IO Configuration



6. Start with Module 1 thru 4, and module 8 (Change from **1746-IB16** to **1746-I\*16**)
  - a. Select Module # (highlighted)
  - b. Double click Current Cards Available section
  - c. Confirm correct current Part # for the selected slot
7. Module 5 thru 7 (Change from **1746-OBP16** to **1746-O\*16**)
  - a. Select Module # (highlighted)
  - b. Double click Current Cards Available section
  - c. Confirm correct current Part # for the selected slot



8. Save the updated PLC program
9. DOWNLOAD the updated PLC program to SLC Processor
10. Put the PLC in RUN mode.