



KNOWLEDGE BASE

Article Type: **Reference**

CPM machines, 30, 40, 50, 60 - “Vibrator Couplings, Grease Fitting” location.

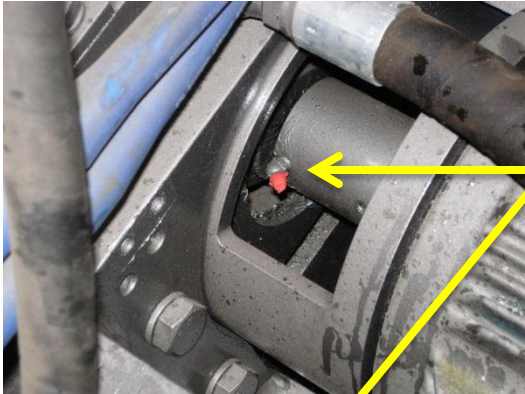
Description:

On all CPM machines, this document shows the location of the Vibrator coupling grease fittings, and the proper intervals that they should be greased.

WARNING

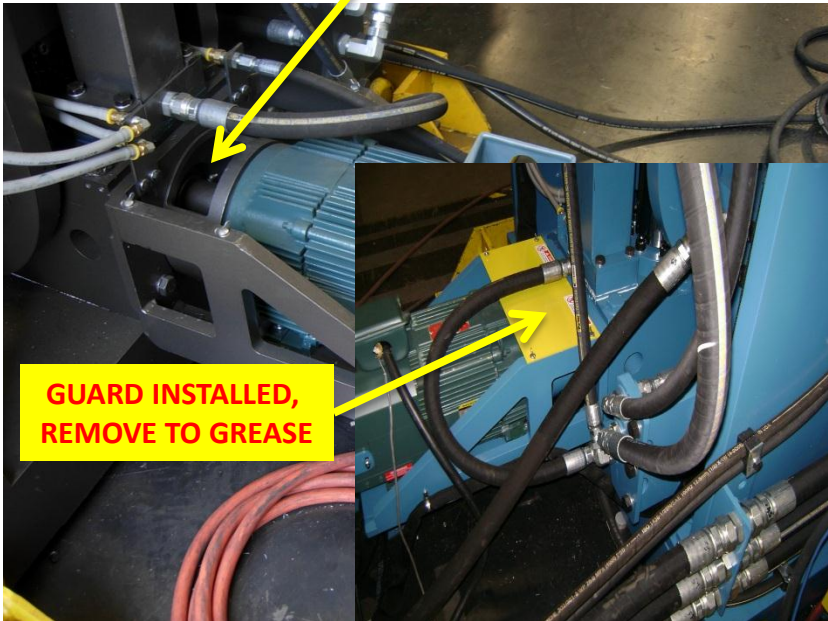
Never work on, clean or service this unit, control panel or any machine or open or remove any protective cover, guard, grate, door, or maintenance panel until the power or energy sources has been turned off, locked out / tagged out, and all moving parts have come to a complete stop and or blocked to prevent movement. Machinery is dangerous - avoid personal injury and or death by following manufacture, Local, and OSHA safety procedures. Contact Columbia Machine for safety decals, guards, horns and beacons.

CPM VIBRATOR COUPLING LOCATIONS AND GREASING INTERVALS

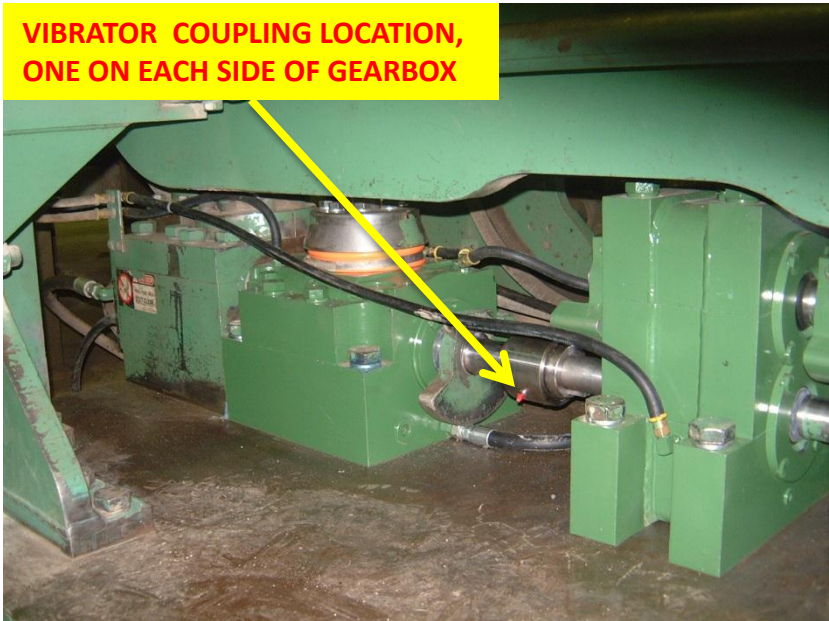


**VFD MOTOR
COUPLING
LOCATION,
REMOVE
GUARD TO
ACCESS
GREASE
FITTING**

**HYDROSTATIC DRIVE
COUPLING LOCATION,
GREASE FROM OPENING
ON BOTTOM OF MOTOR
MOUNTING PLATE**

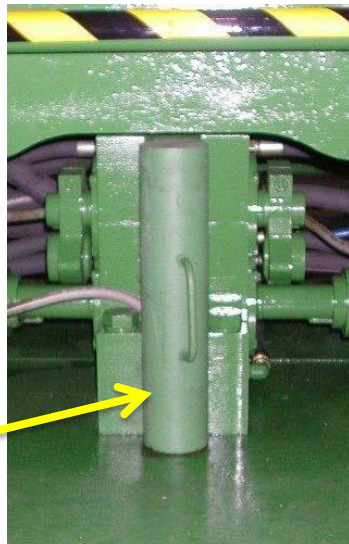


**GUARD INSTALLED,
REMOVE TO GREASE**

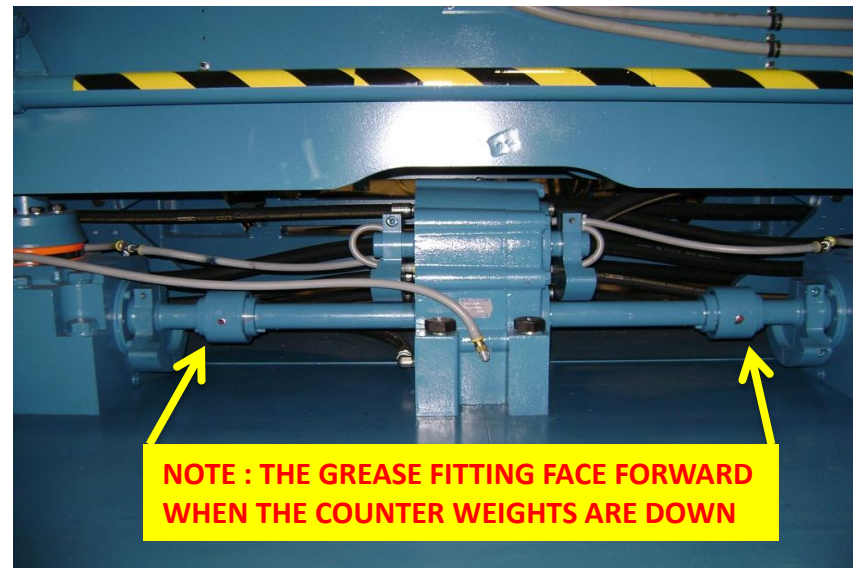


**VIBRATOR COUPLING LOCATION,
ONE ON EACH SIDE OF GEARBOX**

- Before greasing vibration system couplings, raise the stripper beam to it's top position and place beam brace under beam for safety.
- **Safety First:** Always follow your safety guidelines for system lockout/tagout procedures of all energy sources (electrical, hydraulic, and pneumatic).
- Grease recommended, standard high grade # 2 grease, a # 2 synthetic can also be used.
- Couplings should be greased every 8 hours of machine operating time.
- To access couplings on VFD driven machines, remove the guard/cover plate.
- Grease the couplings located between gearbox and vibrators first.
- While greasing, count how many pumps you put into each coupling (vibrator to gearbox), till fresh grease exits seal area. Using the larger pump count of the two, put that many pumps into each motor coupling, these couplings are hidden, so the counts will assure that adequate greasing is maintained.



Beam Brace



NOTE : THE GREASE FITTING FACE FORWARD WHEN THE COUNTER WEIGHTS ARE DOWN