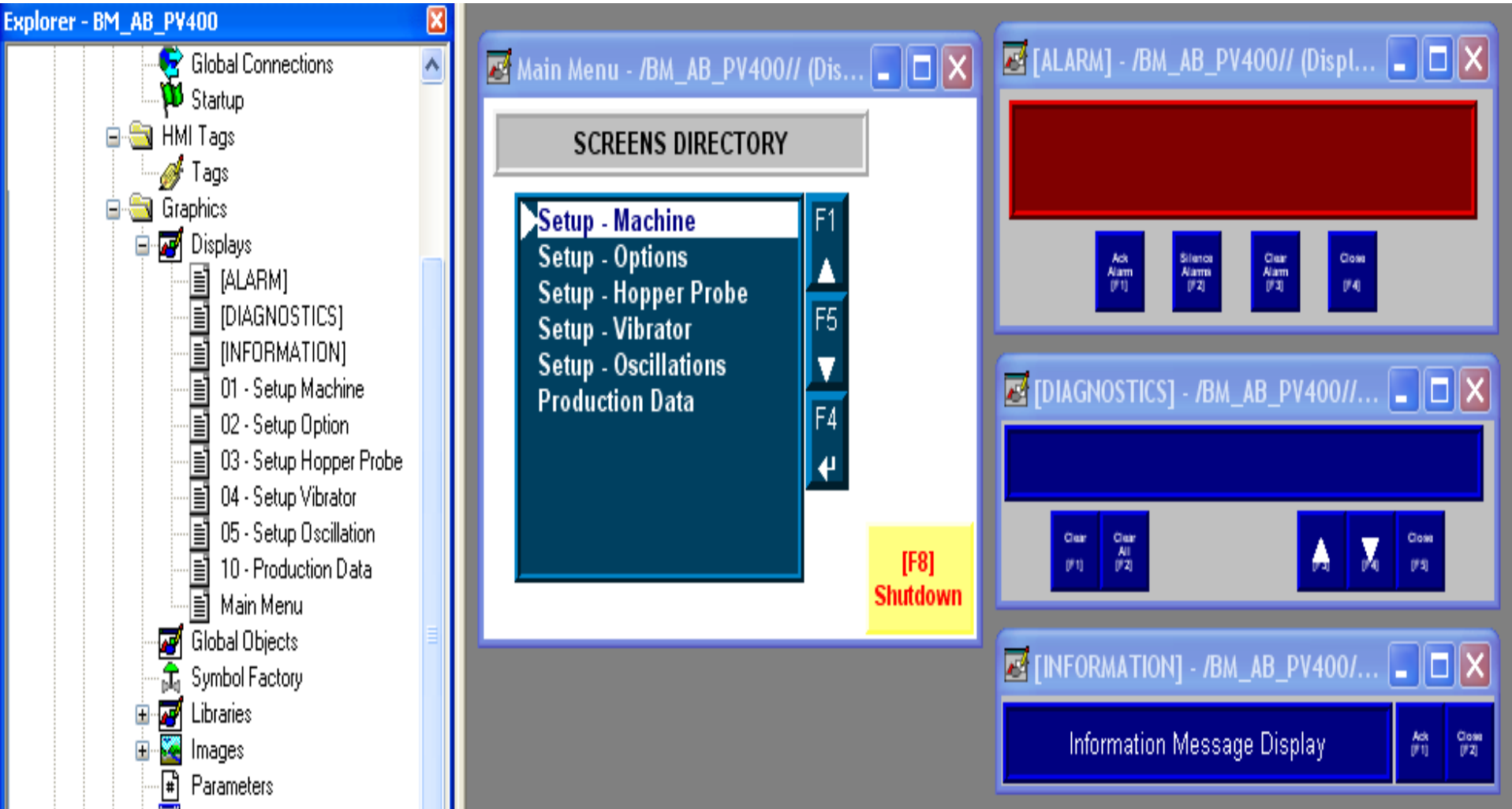


PanelView Plus 400 - Block Machine Directory Screen

For Conversion Kit: 328.100.1140



Page 01 - Block Machine Setup Screen 1

01 - Setup Machine - /BM_AB_PV4...

SETUP - MACHINE

F8 - MAIN

F1- Feed Drawer Dwell Time	###.##
F2- Release Time	###.##
F3- Desired Compression Time	###.##
F5- Last Feed Drawer Dwell Time	###.##
F6- Last Cycle Time	###.##
F7- Actual Compression Time	###.##

Page 02 - Block Machine Setup Screen 2

02 - Setup Option - /BM_AB_PV40...

SETUP - OPTIONS
0=OFF, 1=ON

F8 - MAIN

F1 N10:1 - Auto Density	##	<input type="checkbox"/>
F2 N10:2 - Vibrator Double Start	##	<input type="checkbox"/>
F3 N10:3 - # of Oscillations	##	<input type="checkbox"/>
F4 N10:4 - Slump	##	<input type="checkbox"/>
F5 N10:20 - Comp. Head Up, End of Cycle	##	<input type="checkbox"/>
F6 N10:36 - Pallet Bypass	##	<input type="checkbox"/>

Page 03 - Block Machine Hopper Probe Setup

03 - Setup Hopper Probe - /BM_A... [Min] [Max] [Close]

SETUP - HOPPER PROBE F8 - MAIN

F1 - MFD CYCLES AFTER HOPPER LOW

###	NNNN	F5 - Reset Count
-----	------	------------------

F3 - FFD CYCLES AFTER HOPPER LOW

###	NNNN	F7 - Reset Count
-----	------	------------------

Page 04 - Block Machine Vibrator Setup

04 - Setup Vibrator - /BM_AB_PV4...

SETUP - VIBRATOR **F8 - MAIN**

F1- Vibrator Start Time	###.##
F2- Agitator Start Time	###.##
F3- Agitator Stop Time	###.##
F5- 1st Vibrator Stop Time	###.##
F6- 2nd Vibrator Start Time	###.##
F7- Slump Vibrator Stop Time	###.##

Page 05 - Block Machine Oscillation Setup

The screenshot shows a software window titled "05 - Setup Oscillation - /BM_AB_P...". The window contains a table for setting up oscillation parameters. The table has two columns: parameter names and their current values. The values are all represented by "###.##".

SETUP - OSCILLATION	
	F8 - MAIN
F1- 1st Osc. Refeed Time	###.##
F2- 2nd Osc. Refeed Time	###.##
F3- 3rd Osc. Refeed Time	###.##
F5- 1st Osc. Dwell Time	###.##
F6- 2nd Osc. Dwell Time	###.##
F7- 3rd Osc. Dwell Time	###.##

Page 00 - Block Machine Production Data Screen

The screenshot shows a software window titled "10 - Production Data - /BM_AB_P...". The window contains the following elements:

- PRODUCTION DATA** header text.
- F8 - MAIN** button in the top right corner.
- F1 - Pallet Count** section containing:
 - A cyan display box showing **#####**.
 - A yellow **F5 - Reset Count** button.
- F3 - Machine in Auto** section containing:
 - A cyan display box showing **#####**.
 - A yellow **F7 - Reset Count** button.
- Total Machine Cycle** section containing:
 - A large blue display box showing **NNNNNNNN**.