

**KNOWLEDGE BASE**Article Type: **Instructions****Front Adaption Anchor Assembly for;  
M22HF, M16HF, 1600, that have  
squared base frame****Description:**

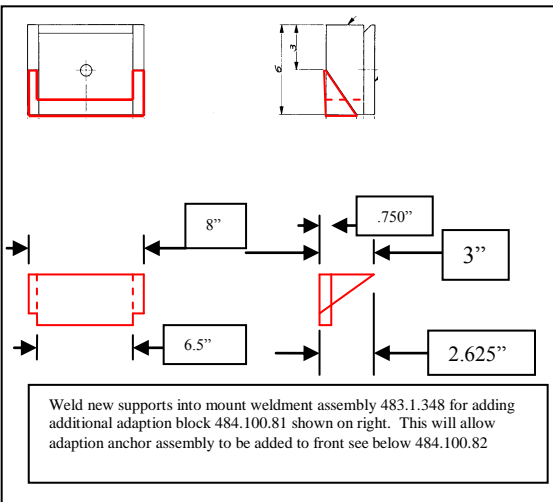
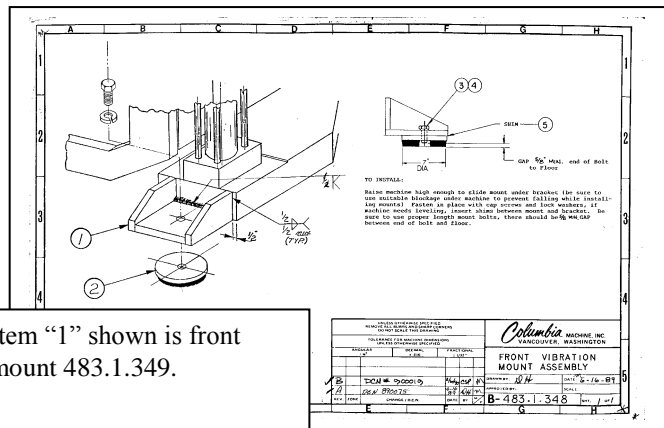
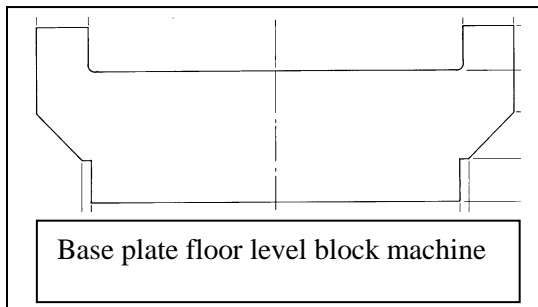
Instructions on “How to” install Front Adaption Anchor assembly on;  
M22HF, M16HF, 1600.

**WARNING**

Never work on, clean or service this unit, control panel or any machine or open or remove any protective cover, guard, grate, door, or maintenance panel until the power or energy sources has been turned off, locked out / tagged out, and all moving parts have come to a complete stop and or blocked to prevent movement. Machinery is dangerous - avoid personal injury and or death by following manufacture, Local, and OHSa safety procedures. Contact Columbia Machine for safety decals, guards, horns and beacons.

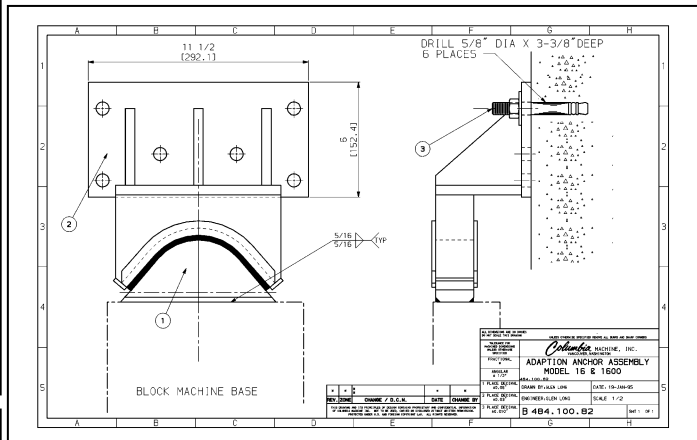
## Floor Level Machines Front Adaption Anchor Assembly with machine boxes squared base frame

Machine boxes 483.1.3, 483.12.3, & 483.13.27 having the squared base frame front cylinder supports it is necessary when adding the Anchor assembly 484.100.37 it is also necessary to include adapt block 484.100.81 shown on print 484.100.82. See below these changes and additions.



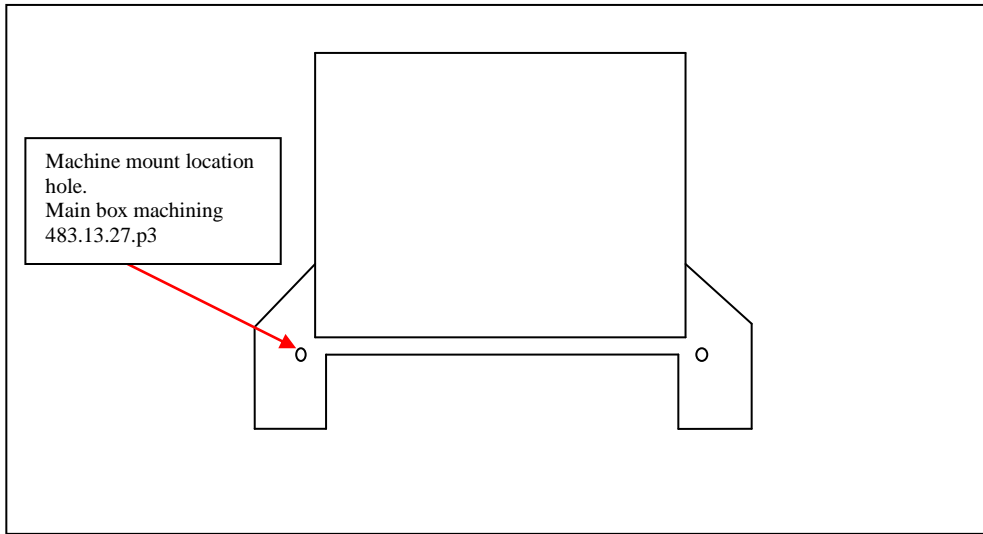
Item (1) shown on print 484.100.82 is adaption block that is required to be welded to the above front mount assembly which will allow the anchor assembly 484.100.82 to be mounting as shown in print.

If you need additional information please contact Columbia Machine Inc. Concrete Products Service 1-360-694-1501.

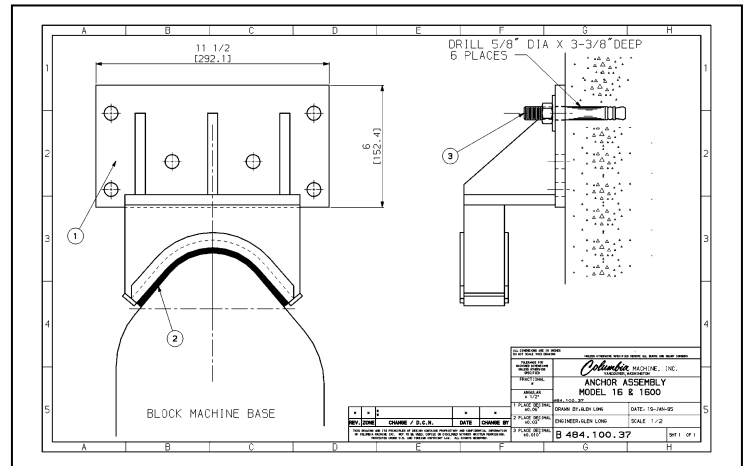
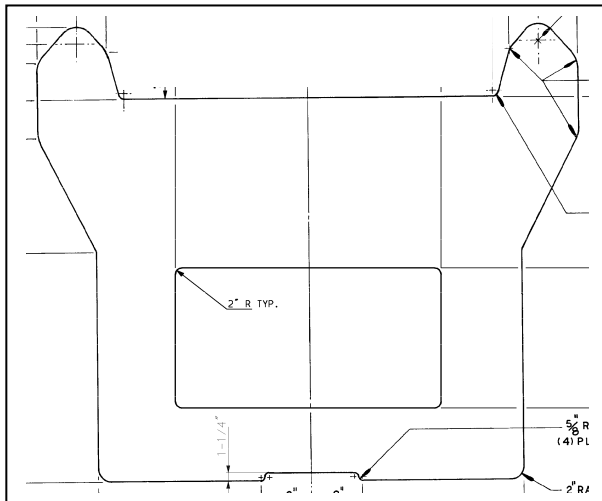


Requirements modification to the front mount support 483.1.349 when used only on the front base plate also shown above with square front base area where the stripper cylinders are mounted.

If you are looking at installing the adaption anchor assembly on the front of your base and do not have the added front vibrator mount due to the vibrator being mounted on the base See print 483.13.27 shows the vibrator mounted back behind the stripper cylinder mount area.



Later block machine boxes with rounded foot area as shown below do not require any additional adaptations. Follow the installation anchor assembly for models 16 & 1600 floor level machines 484.100.37.



Installation assembly would be as shown in upper right.

If you have any questions or need assistance with machine mount installation leveling & loading or conversion installation please call Columbia Machine Inc. Service 1-800-628-4065

**Machine Mount Installation Procedure:**

This procedure is for installing the Model 16 or 1600 on its foundation pad for the first time. This procedure is designed to make sure your machine is installed level with the machine mounts being loaded properly as quickly, simply and accurately as possible.

**Tools you will need:**

- 1-1/2" Socket (3/4" drive)
- 15/16" Socket (3/4" drive)
- 650 ft-lb capacity Torque Wrench (3/4" drive)
- 6' high quality bubble level
- 8' long piece of straight edge
- 2 same height blocks (approx. 4" x 4" x 4" tall)
- Crane or lift rated to move and place machine  
(See weights listed by machine size to the right)

**Machine mount kit included with machine:**

- 9" dia shims (1-10 ga. & 2-16 ga.)
- 5" dia shims (2-14 ga.)
- 2- 7" dia machine mounts
- 1- 9" dia machine mount
- 2- 4.5" long 5/8" hex head bolts and lockwashers
- 1- 2.5" long 1" hex head bolt and lockwasher

**A) Verifying Foundation Pad Level:**

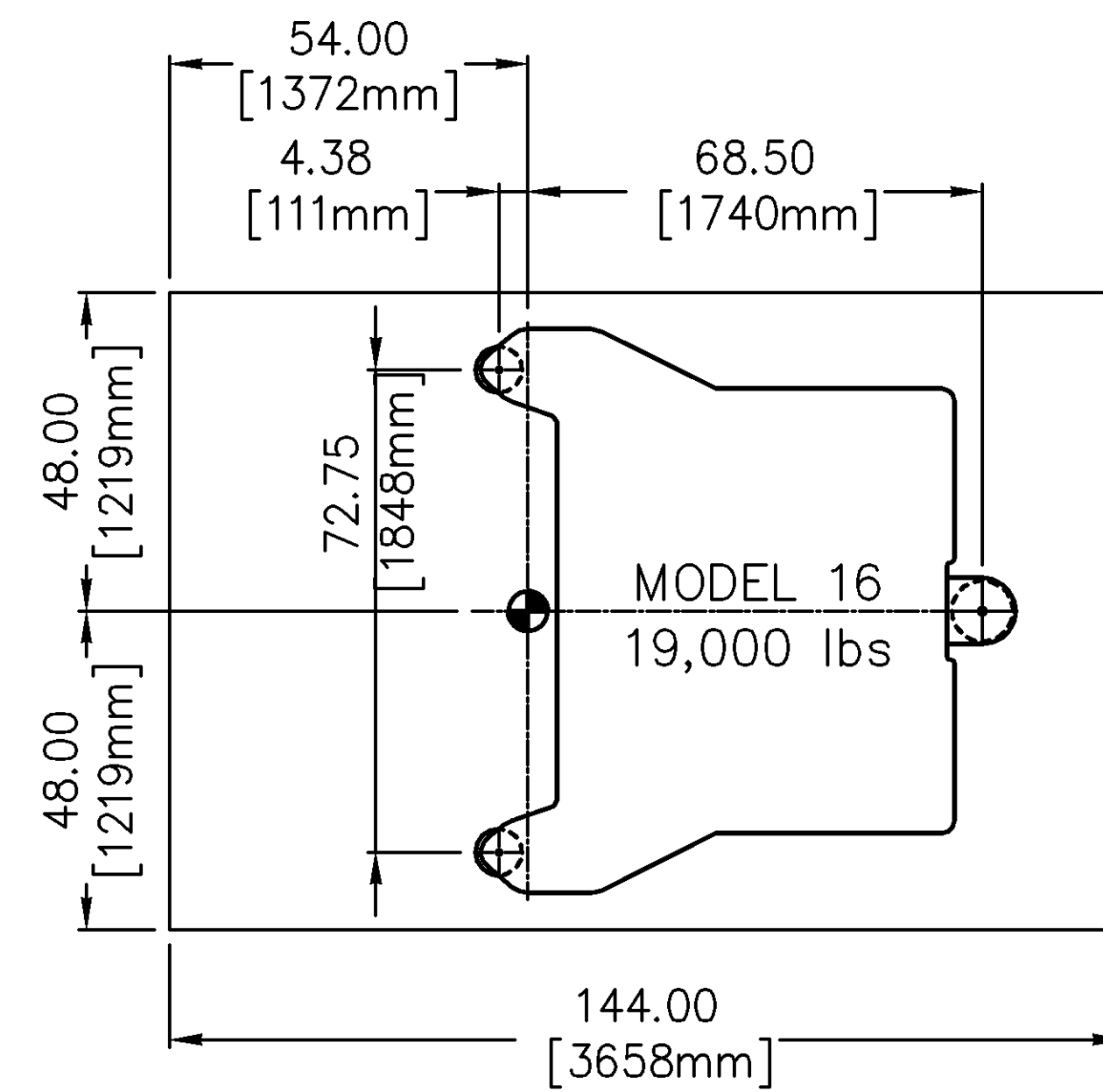
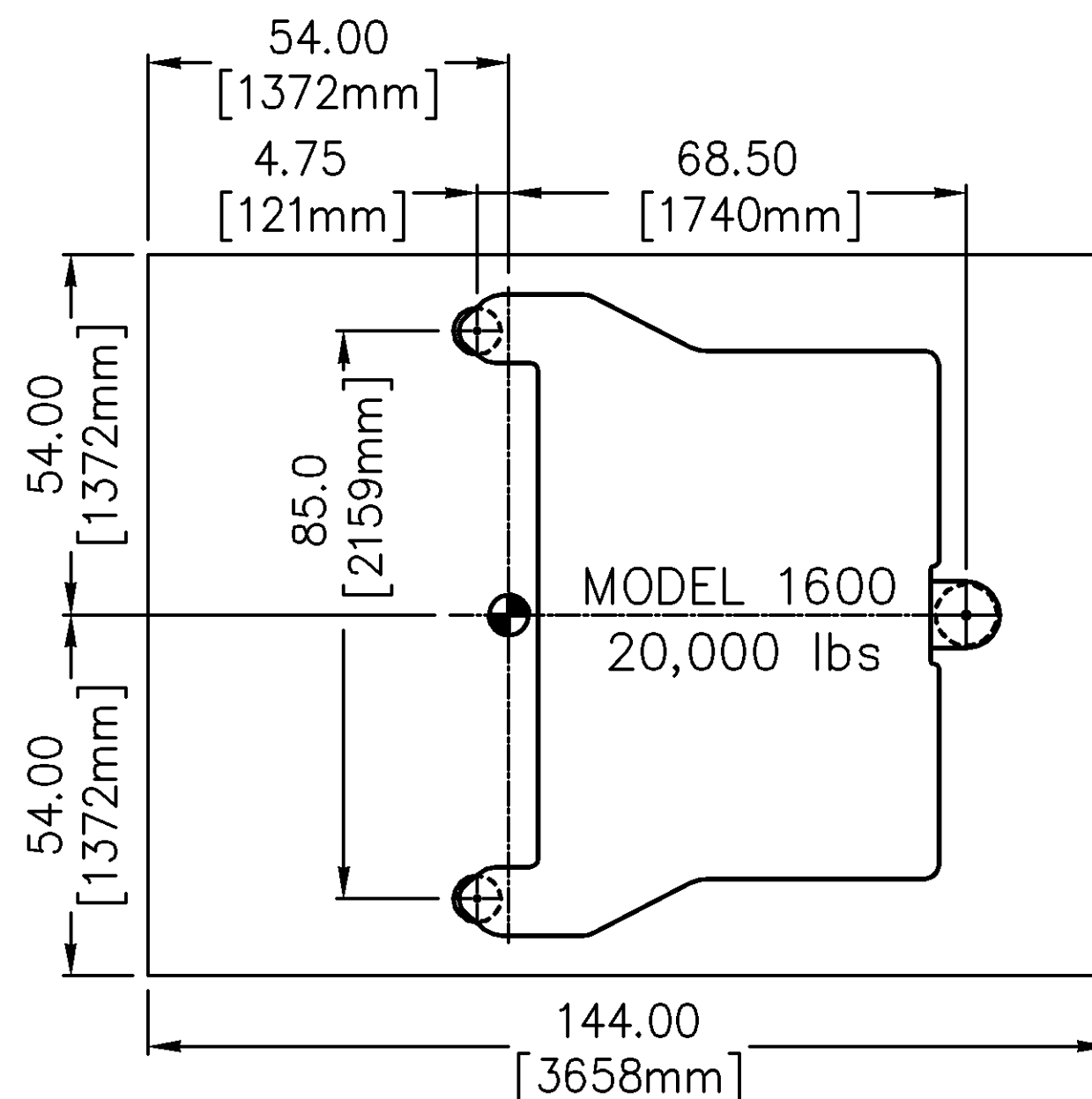
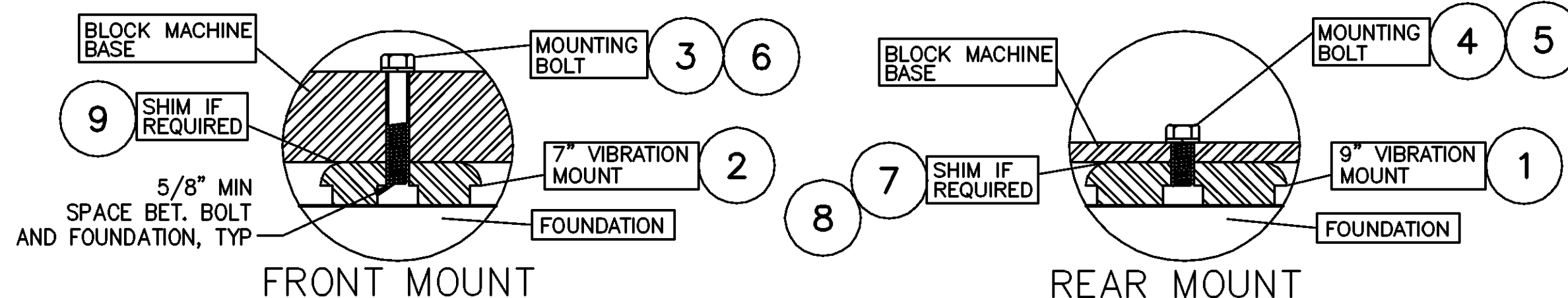
Your foundation pad as installed per Columbia Machine specifications should be level however, this should be verified prior to placing the machine on the foundation. This procedure will establish where the machine will need to be placed and ensure it is level and the machine mounts are properly loaded once placed.

- 1) Use the foundation print and plant layout provided to determine where the centerlines of the machine will be on the foundation pad. Snap these lines with chalk or something permanent if required.
- 2) Using the centerlines mark circles on the foundation approximately where the machine mounts will sit; the 9" mount is for the rear of the machine.
- 3) Start with two locations and determine which one is higher using the 4x4 blocks, bubble level and the straight edge. (Place the 4x4 blocks inside the marked circles)
- 4) Use the highest location from step 3 and compare it to the next location to determine which one is higher. Use the highest of those two as the starting point for determining the shims that will be required.
- 5) Starting with the highest location, compare it to one of the other locations. Determine how much shim is required on top of the 4x4 block so the level is level between the two points. Remember more than one shim may be required; use 5" shims for the front, 9" shims for the rear.
- 6) Repeat step 5 for the last location, leaving the shims required on the steel plate in its respective location. If you need additional shims contact Columbia Machine.
- 8) Once all locations have been compared to the highest one you have now determined the shims that will need to be installed between the machine mount and the baseplate.

For more info. or assistance contact Columbia Machine Service at 1-800-628-4065

**B) Placing the machine:**

- 1) Bring the machine using the crane or lift to place it on the foundation pad with lift points provided on the machine frame.
- 2) With the machine safely supported over the foundation pad install the appropriate machine mounts and shims with the bolts provided. Hand tighten the bolts.
- 3) Lower the machine into place using the centerlines marked on the foundation to place the machine according to the plant layout.
- 4) Make sure the steel plates on the foundation are thoroughly cleaned prior to placing the machine on the foundation.
- 5) Once the entire weight of the machine is resting on the foundation pad, use the level to verify that the section is level side to side and front to back; add shims if required.
- 6) Torque machine mount bolts. (150 ft-lb for 5/8" bolt, 644 ft-lb for 1" bolt)
- 7) Your machine is now level and machine mounts should be evenly loaded.



* * *	* *	UNLESS OTHERWISE SPECIFIED		THIS DRAWING AND ITS PRINCIPLES OF DESIGN CONTAINS PROPRIETARY AND CONFIDENTIAL INFORMATION OF COLUMBIA MACHINE, INC. DESIGN NOT TO BE USED, COPIED OR DISCLOSED WITHOUT WRITTEN PERMISSION. PROTECTED UNDER U.S. AND FOREIGN COPYRIGHT LAW. ALL RIGHTS RESERVED.		 COLUMBIA MACHINE, INC. VANCOUVER, WA 98661 CONCRETE PRODUCTS DIVISION	MACHINE MOUNT INSTALLATION MODEL 16, 1600		DRAWN BY: GLEN LONG	REFERENCE: *	EST WEIGHT/MASS *
B	*	ADDED TERM "SAFELY SUPPORTED" TO LNE B2. ADDED "ADD SHIMS IF REQUIRED" TO LINE B5.	9AUG2011	SLG	ALL DIMENSIONS ARE IN INCHES TOLERANCES X.X ±0.06 X.XX ±0.03 X.XXX ±0.010 FRACTION ±1/16" WELDS +0.06/-0.00		THIRD ANGLE PROJECTION	ENGINEER: *	DATE: 15-JAN-1991	REF. SCALE *	REV. SHEET A 1 OF 1
A	*	MORE DETAILED INSTRUCTIONS, ADDED WEIGHTS AND DIMENSIONS FOR BOTH MODEL 16 AND 1600	07-JAN-11	SLG	REMOVE ALL BURRS AND SHARP CORNERS THREAD CLASS 2A/2B		SIZE DWG NO: B 483.10.307				
REV. ZONE		CHANGE DESCRIPTION	DATE	CHANGE BY							

For more info. or assistance contact Columbia Machine Service at 1-800-628-4065